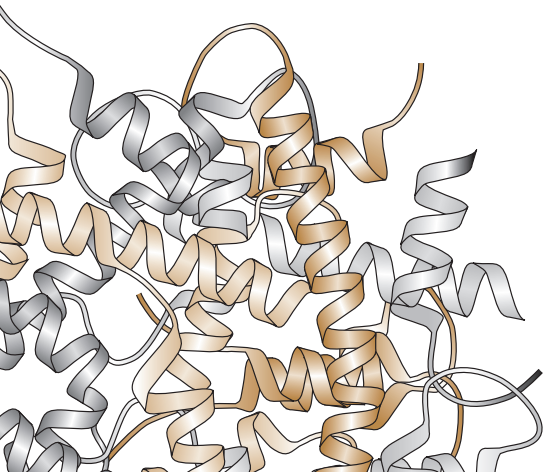


The Promise of Epigenetic Therapy

Self-Assessment Quiz

- Based on Knudson's "two-hit" hypothesis of cancer causation, a "hit" can be:**
 - an inherited gene mutation.
 - epigenetic silencing.
 - loss of heterozygosity.
 - all of the above.
- Which agent is incorporated into DNA?**
 - Decitabine (5-aza-2'deoxyctidine)
 - Azacitadine (5-azacytidine)
 - Hydroxyurea
 - 5-aza-2'deoxyctidine triphosphate
- Which activities are associated with HDAC inhibitors?**
 - Histone acetylation
 - Uncoiling of chromatin
 - Transcription of genes
 - All of the above
- How many classes of HDACs have been identified?**
 - One
 - Two
 - Three
 - Four
- A study evaluating MDS response using International Working Group criteria found that the median number of cycles from first azacitidine treatment to any response was:**
 - 1 cycle.
 - 3 cycles.
 - 6 cycles.
 - 17 cycles.
- The median survival duration of patients who responded to treatment with combination azacitidine, valproic acid, and all-trans retinoic acid (ATRA) was:**
 - 55+ weeks.
 - 34 weeks.
 - 22 weeks.
 - 17 weeks.
- Clinical data support which approach to combination therapy with methylation inhibitors and HDAC inhibitors?**
 - HDAC inhibitor followed by a methylation inhibitor
 - Methylation inhibitor followed by an HDAC inhibitor
 - Concurrent use of both classes of agents
 - Neither approach produces clinical effect
- Clinical data support the use of lenalidomide for which patient population?**
 - Any patient with myeloid leukemia
 - Lenalidomide has not produced useful clinical effects
 - Elderly never-treated patients
 - Patients with low-risk MDS who are unlikely to benefit from conventional therapy



The Promise of Epigenetic Therapy

Answer Sheet and Evaluation Form

Please print this form, complete it, and submit it as instructed below. For each question, please circle the letter that corresponds to the correct answer. A score of 75% correct is required to obtain a maximum of 2 *AMA PRA Category 1 Credits*TM.

1. a b c d 3. a b c d 5. a b c d 7. a b c d
2. a b c d 4. a b c d 6. a b c d 8. a b c d

Activity Evaluation

Please take a few moments to complete the following evaluation of this CME activity so that we may serve you better in the future.

1. CME activities must be free of commercial bias for or against any product. In this regard, how would you rate this activity?

- Excellent Good Fair Poor

2. How would you rate the overall educational quality of this activity?

- Excellent Good Fair Poor

3. How well did this activity meet its stated learning objectives?

- Excellent Good Fair Poor

4. What is the likelihood that you will make gradual or long-term changes in your clinical practice as a result of this activity? Please specify.

- Highly likely Somewhat likely Not likely

Please specify: _____

5. What suggestions do you have for improving this activity (eg, changes in objectives, educational technique, length, format)?

6. What topics not covered in this activity would be of value to you?

Important: Please print all information *clearly* to assure prompt and accurate issuance of your CME certificate.

Name, Degree

Signature (I certify that I have completed this CME activity as designed.)

Address

City

State

Zip code

Telephone

**Please mail or fax completed form to: Department of Continuing Medical Education,
Current Therapeutics Inc., 23230 Chagrin Blvd., Suite 815, Beachwood, OH 44122, fax: 216.464.6364
Send by August 31, 2008.**

Activity code: 273-4